



**SALWAN PUBLIC SCHOOL**

**Sector-15 (II), Gurugram**



***Winter Holiday Practice Sheet***

**(2017-18)**

***SERVICE BEFORE SELF***

**CLASS – VI**

# English

## Sample Question Paper -1

Subject: English

Time Duration: 3 hours

M.M: 80

**General Instructions: All questions of all sections are compulsory.**

**Section – A (Reading) : 20 Marks**

**Section – B (Writing) : 20 Marks**

**Section – C (Grammar) : 10 Marks**

**Section – D (Literature) : 30 Marks**

### Section-A (Reading)

**1. Read the following passage carefully and answer the questions that follow:**

A mouse living in a farmhouse peeped out from his hole, one day, and got the shock of his life. The farmer was displaying a mouse trap to his wife. Panic-stricken he ran out to consult his neighbours. But they were not at all helpful. "Poor you" said the dog. "Bad Luck!" clucked the hen. "Obviously master does not want you around", said the goat laughing noisily. "Watch your step!" "Quite frightened, the mouse stayed back in his hole that night, not daring to go out though he was faint with hunger. Hardly had the lights in the house been extinguished when a loud sound was heard. The farmer's wife came out of the bedroom and picked up the trap. In the darkness she did not see the snake dangling from it. The snake bit her and she fell unconscious. The farmer rendered whatever first aid he could, and then mad with anger at the dog for letting the snake come in, shot the animal. His wife developed fever the next day, and became very weak. Somebody told the farmer that chicken soup would restore her strength, so he killed the hen and made soup. The woman died a few days later. A lot of relatives came for the funeral and stayed on. The farmer slaughtered goat to feed them. By the twist of irony, the trap had destroyed everyone except the one it had been intended for!

**1.1 Choose the correct option.**

**1x4=4**

i) **What saved the mouse from the mousetrap?**

- (a) His cleverness.      (b) His fear.      (c) His cautious nature.

ii) **The mouse expected that his neighbours would \_\_\_\_\_**

- (a) suggest ways to avoid being caught in the trap.  
(b) ask him to leave the farmhouse.

(c) request the farmer to spare the mouse.

iii) **The farmer's wife died because** \_\_\_

(a) she had a head injury. (b) she had been bitten by a snake. (c) she had fallen off the stairs.

iv) **The expression 'twist of irony' suggests which of the following meanings?**

(a) When strange things don't happen. (b) When something expected happens

(c) When what happens is opposite to what is expected.

**1.2. Answer the following questions**

**3x2=6**

i) Which two animals were killed for food?

ii) Who were the 'neighbours'? Name them.

iii) How did the mouse react to the 'mouse trap'?

**1.2 Find the word in the passage that means the same as-**

**2x1=2**

(a) terrified \_\_\_\_\_

(b) lacking awareness \_\_\_\_\_

**2. Read the following poem carefully and answer the questions that follow:**

Loveliest of trees, the cherry now  
Is hung with bloom along the bough,  
And stands about the woodland ride  
Wearing white for Eastertide.

Now of my three score years and ten  
Twenty will not come again,  
And take from seventy springs a score  
It only leaves me fifty more.

And since to look at things in bloom  
Fifty springs are little room,  
About the woodlands I will go  
To see the cherry hung with snow.

**2.1 Answer the following questions.**

**1x8=8**

1. The rhyme scheme of the poem is.....

a) aa bb b) ab ab c) ab ba d) ab ab cd cd

2. How old is the poet?

a) seventy b) twenty c) fifty d) ten

3. The season described in the poem is

a) summer b) autumn c) spring d) winter

4. Which word in the poem means ‘a large branch of trees’
5. Which word in the poem means ‘an area of land covered with trees’
6. According to the poet, which tree is the loveliest?
7. Pick out an example for alliteration from the poem.
8. Where will the poet have to go to see the cherry tree covered with snow?

### Section -B (Writing)

3. Write an autobiography of ‘**Rain**’ in about 100- 120 words. 7
4. All the members of your family are going to attend your cousin’s marriage in Mumbai. Write a letter to the Principal requesting her to grant you 3 days leave to attend the wedding. 8
5. Your school is organising an Inter-House Song Competition on Independence Day. You are the Head Boy/ Girl of your school. The Principal of your school has asked you to draft a notice in about 50 words informing the students of classes VI to VIII about the event and requesting them to take part in it. Include necessary details of date, time and last date to submit names. Put your notice in the box. 5

### Section-C (Grammar)

**6. The following passage has not been edited. There is one error in each line. Write the incorrect word and the correction. The first one has been done for you. 6x ½ =3**

Error	Correction
When my summer vacation I have gone to Dehradun. There I saw many monkey. They all looked much cute and naughty. The baby monkeys keep fighting with each another and kept roll in the mud.	a) <u>When</u> <u>During</u> b) _____ c) _____ d) _____ e) _____ f) _____ g) _____

**7. Change the following sentences into indirect speech. 3x1=3**

- a. Sally said, ‘I am going to the beach.’
- b. The maid said, ‘I left the parcel on the table.’
- c. The little boy said, ‘I have sprained my ankle.’

8. Change the following sentences into passive voice.

2x 1=2

- a. The teacher will give a test tomorrow.
- b. Children are playing football.

9. Rearrange the words to form meaningful sentences. 2x1=2

- a. the/ butterfly/ on/ a / yellow/ sat/ flower/ beautiful
- b. bad/ yourself/ with/ comparing/ is / others/ it

### Section-D (Literature)

10. Answer the following questions with reference to context.

3x1=3

**The mountain and the squirrel**

**Had a quarrel;**

**And the former called the latter *Little Prig*.**

- a. What do you think had started the quarrel?
- b. What attitude is shown by the speaker of the words *Little Prig*?
- c. What was the reply of the other to the comment *Little Prig*?

11. Answer the following questions with reference to context. 3x1=3

**My sincerest apologies, Your Highness, but I have to agree with my fellow physicians. You are suffering from a rare disease called outofmental focus. We have no pills for that.**

- a. Who is the speaker of these lines?
- b. In what way, did he agree with the fellow physicians?
- c. What disease did he say the king was suffering from? Was he right?

12. Answer the following questions in about 40-60 words.

8x2=16

- a. What does the fact that the king's men could not find a happy man suggest?
- b. Why was Jakes flogging Black Beauty?
- c. Why did Jakes say that he must use the check-rein on Black Beauty?
- d. Why were the lifeboats not helpful in saving the crew?
- e. How did the leather jacket prove useful to Gulliver?
- f. What two things had the writer's friends cautioned about?
- g. Why did the writer say that they set up their photography gear in double-quick time?
- h. What do you understand by the phrase 'grown-up' river?

13. Answer the following questions in about 80-100 words.

2x4=8

- a. The writer says, 'We had not expected things to happen so fast.' Why does the writer say so?
- b. Who came to Black Beauty's rescue when he was being flogged by Jakes? What advice did the person give Jakes?

## Sample Question Paper -2

**Subject: English**

**Time Duration: 3 hours**

**M.M: 80**

**General Instructions: All questions of all sections are compulsory.**

**Section – A (Reading) : 20 Marks**

**Section – B (Writing) : 20 Marks**

**Section – C (Grammar) : 10 Marks**

**Section – D (Literature) : 30 Marks**

### Section-A (Reading)

1. Read the following passage and answer the questions that follow.

12

#### William Wordsworth

William Wordsworth, the famous British poet, was one of the most important poets of the Romantic Movement in English Literature.

He was born on 17 April 1770, in the scenic region of north-west England called Lake District. The beautiful landscape of the region had an enduring influence on Wordsworth's imagination, creating in him a love for nature. This can be seen in most of his poems. Wordsworth lost his mother when he was eight and his father when he was thirteen. Of his four siblings, Wordsworth was most attached to his younger sister, Dorothy. Several of his poems are addressed to his beloved sister.

Wordsworth began by attending St John's College, Cambridge in 1787. He often spent his holidays on long walking tours, visiting places famous for the beauty of their landscape. In 1790, he took a nearly three-thousand-mile-long walking tour of Europe, during which he toured the Alps extensively and also visited nearby areas of France, Switzerland and Italy. The following year, he graduated from Cambridge without distinction.

In 1843, Wordsworth was made the Poet Laureate of England. A Poet Laureate is the official poet of the king of England. By this time, Wordsworth was considered one of the greatest poets of his age. However, when his daughter Dora died in 1847, Wordsworth stopped writing poetry altogether. He died, three years later, on 23 April 1850.

Wordsworth was one of the first poets to actively reflect on the beauty and glory of nature and the power of imagination. His poems continue to be read all over the world by children and adults alike.



**1.1. Choose the correct option.**

**4x1=4**

a. The phrase 'an enduring influence' refers to

- |                        |                               |
|------------------------|-------------------------------|
| (i) A long cold        | (iii) having a lasting effect |
| (ii) Related to nature | (iv) weakness                 |

b. Wordsworth was \_\_\_\_\_ years old when he died.

- |         |          |
|---------|----------|
| (i) 82  | (iii) 80 |
| (ii) 83 | (iv) 79  |

c. The position of honour that was given to Wordsworth was \_\_\_\_\_.

- |                    |                     |
|--------------------|---------------------|
| (i) Nobel Laureate | (iii) Poet Laureate |
| (ii) Nature Lover  | (iv) Great poet     |

d. His \_\_\_\_\_ can be seen in most of his poems.

- |                           |                             |
|---------------------------|-----------------------------|
| (i) love for the language | (iii) love for his daughter |
| (ii) love for Nature      | (iv) love for his country   |

**1.2. Answer the following questions.**

**3x2=6**

- What developed in Wordsworth a love for nature?
- How did Wordsworth spend his holidays?
- When and why did Wordsworth stop writing poetry?

**1.3. Find words from the passage which mean the same as:**

**2x1=2**

- Renowned- \_\_\_\_\_ (para 1)
- Think about- \_\_\_\_\_ (para 5)

## **SERVICE BEFORE SELF**

**2. Read the following poem and answer the questions that follow:**

What is this life if, full of care,  
We have no time to stand and stare.

No time to stand beneath the boughs  
And stare as long as sheep or cows.

No time to see, when woods we pass,  
Where squirrels hide their nuts in grass.

No time to see, in broad daylight,  
Streams full of stars like skies at night.

No time to turn at Beauty's glance,  
And watch her feet, how they can dance.

No time to wait till her mouth can  
Enrich that smile her eyes began.

A poor life this if, full of care,  
We have no time to stand and stare.

**2.1 Based on your reading of the poem answer the following questions. 3x2=6**

- Why does the poet want us to have some free time or leisure?
- What according to the poet is a poor life?
- Write any two pairs of rhyming words from the poem.

**2.2 Find the words from the poem which mean the same as: 2x1=2**

- Look fixedly- \_\_\_\_\_ (stanza 1)
- branches - \_\_\_\_\_ (stanza 2)

### Section-B (Writing)

3. Write an autobiography of a 'Camel' in about 100- 120 words. **7**

4. You were down with viral fever and could not appear for the last two exams. Write a letter to the Principal requesting her to grant you permission to appear for the retest. **8**

5. Imagine you have found a **Wrist Watch** in the playground. Write a notice in not more than 50 words informing the students about it. Give details about when and where it was found, who is to be contacted. Put your notice in the box. **5**

### Section-C (Grammar)

**6. The following passage has not been edited. There is one error in each line. Write the incorrect word and the correction. The first one has been done for you.  $6 \times \frac{1}{2} = 3$**

	Error	Correction
On an hot summer day, a lion was	a) <u>an</u>	a _____
rested in the shade of a tree. A little	b) _____	_____
mouse lives at a tree nearby. As the	c) _____	_____
mouse came out of their hole,	d) _____	_____
unfortunately, it rolls over the body	e) _____	_____
of the lion. The lion catch the mouse	f) _____	_____
in its paws and was go to kill it when	g) _____	_____



**7. Do as directed.**

**3x1=3**

- a. Victor went to the doctor. He was feeling unwell. (Join using a suitable conjunction)
- b. I failed the test. I studied hard. (Join using a suitable conjunction)
- c. She left the office. She had finished her work. (Join using a suitable conjunction)

**8. Fill in the blanks with the correct form of the verb from the brackets.**

**4x ½ =2**

- a) We \_\_\_\_\_(wait) for the train for over an hour.( present perfect continuous)
- b) He \_\_\_\_\_ (extend) his full support to the team. ( simple past)
- c) He \_\_\_\_\_ (study) in his bedroom when the lights went out.(past continuous tense)
- d) The yacht \_\_\_\_\_ (sink) before the rescue team arrived. (past perfect tense)

**9. Given below are some words/ phrases in a jumbled order. Rearrange them to form meaningful sentences.**

**2x1=2**

- a. a lot of / trees / give us / products.
- b. also attract / soil erosion / they / rain / and / prevent.

**Section-D (Literature)**

**10. Answer the following questions with reference to context.3x1=3**

**'The creatures ran off a second time.'**

- a. Who did the creatures run off from?
- b. When had the 'creatures' run off the first time?
- c. What made them run off the second time?

**11. Answer the following questions with reference to context.**

**3x1=3**

**I'll not deny you make  
A very pretty squirrel track;  
Talents differ; all is well and wisely put;  
If I cannot carry forests on my back,  
Neither can you crack a nut.**

- a. Name the poem and the poet.
- b. What two things does the squirrel acknowledge the mountain can do?
- c. How does the squirrel defend itself against the big mountain?

**12. Answer the following questions in about 40-60 words.**

**8x2=16**

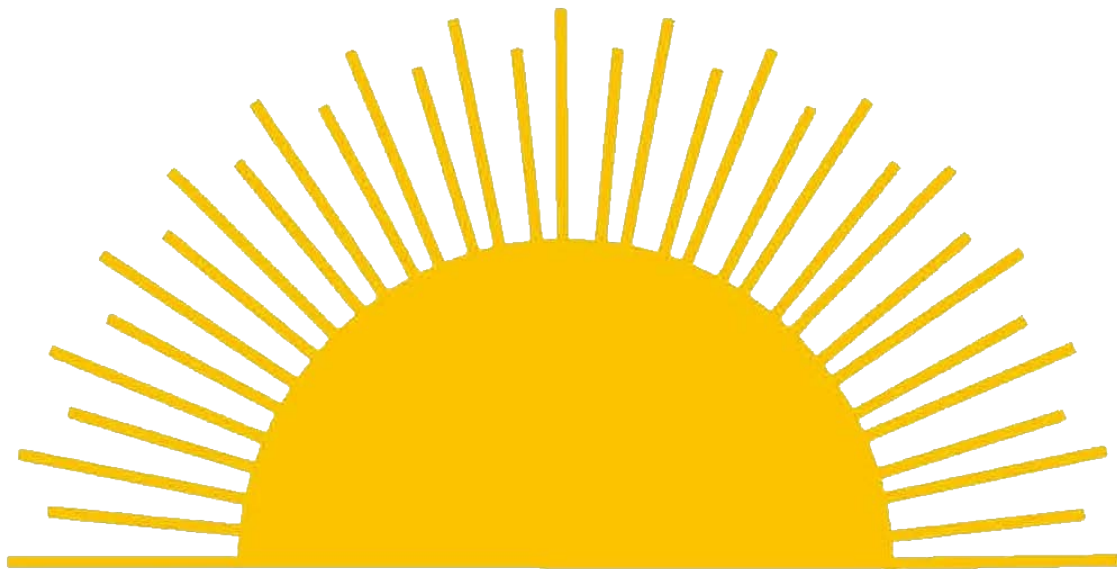
- a. What was the lady's suggestion to Jakes?
- b. Why did Jakes want to hitch up the check-rein again?
- c. What were the diagnoses provided by the 'three rogue physicians'?
- d. What remedy did Dr Sharp suggest for the king's incurable disease?

- e. What happened to Gulliver after the shipwreck?
- f. Why does the poet wish for a higher tree in the poem 'Foreign Lands'?
- g. What kind of river would you call 'grown up'?
- h. What made the Bushman flash a set of white teeth?

13. Answer the following questions in about 80-100 words.

2x4=8

- a. Why did the writer and her companion have puzzled expressions? How did the Bushman put them at ease?
- b. The king in 'The Enchanted Shirt' did cartwheels on the bed. What does this tell you about the state of his health?



***SERVICE BEFORE SELF***

# Maths

## Sample Question Paper -1

Subject: Maths

Time Duration: 3 hours

M.M: 80

### General Instructions:

Q 1 to 5 carry 2 marks ;

Q 6 to 15 carry 3 marks;

Q 16 to 25 carry 4 marks;

Q.1. Write the whole numbers from 30 to 40. What fraction of them are odd numbers?

Q.2. Subtract Rs. 75.85 from Rs. 200

Q.3. What is the length of the coloured tape required to stick on the sides of a rectangular scenery .The length of scenery is 20 cm and its breadth is 0.12 m.

Q.4. Construct an angle of  $90^\circ$  and label it.

Q.5. Draw and show the lines of symmetry of a rectangle.

Q.6. Shikha reads 20 pages of a book containing 100 pages. Nikhil reads three-fourth of the same book. Who reads more pages and by how much?

Q.7. Dravid travelled 26 km 54 m by bus, 105 km 965 m by car and rest 1km 87 m he walked. How much distance did he travel in all? (convert each into decimals)

Q.8. A dice is thrown 30 times and the following scores were obtained:

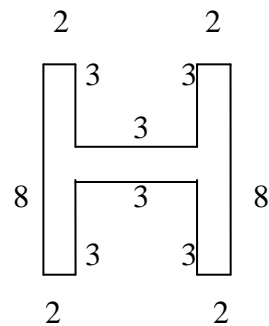
4 1 3 2 6 2 4 2 1 2

3 6 2 6 4 2 1 4 1 2

5 4 2 2 5 4 3 2 5 6

Arrange the data in the tabular form using tally marks.

Q.9. Find the area of the given figure in cm:



Q.10. Rita scored 30 marks in Maths,  $x$  marks in Science and  $y$  marks in English. Her teacher deducted 5 marks for bad handwriting in all the subjects. What is her score in the each subjects? Also write the expression for the total score.

Q.11. Mohan and Sohan invested Rs 15000 and Rs 25000 respectively in a business. They decided to share the profit in the ratio of their investment. If their profit is Rs 12000, how much does each get?

Q.12. Are the given ratios in proportion:

Rs. 2.50 to 75 paise and 60 cm to 2.4 m

Q.13. Draw and show :

- a letter having only vertical line of symmetry
- a letter having only horizontal line of symmetry
- a letter having vertical reflection symmetry.

**SERVICE BEFORE SELF**

Q.14. Construct an angle of  $60^\circ$  and bisect it.

Q.15. Draw a circle and any two of its chords. Construct the bisectors of the chords. Where do they meet?

Q.16. Subtract the difference of  $6\frac{1}{9}$  and  $2\frac{3}{10}$  from their sum.

Q.17. Abdul bought sugar for Rs 45.65, tea for Rs 78.90, milk powder for Rs 111.45 and fruits for Rs 97.75. He gave Rs 1000 to the shopkeeper, calculate the amount he received back.

Q.18. On the basis of the survey, it was found that in a day about 1000 trucks, 700 buses, 2500 cars, 4500 two wheelers and 2000 cycles pass through a road leading to Jaipur. Draw a bar graph to represent the given information.

Q.19. Rohan wants to cover the floors of a room 500 cm wide and 6 m long by squared tiles. If each square tile is of side 0.5 m, then find the number of tiles required to cover the floor of the room. Also find the money spent in buying the tiles if one tile costs Rs 25.

Q.20. Mohini is  $x$  years old. Express the following in the form of an expression:

- i) three times Mohini's age after one year
- ii) four times Mohini's age 3 years ago
- iii) her Uncle's age if he is 5 times as old as Mohini will be after 2 years
- iv) her cousin's age if he is 2 years less than  $\frac{1}{3}$  of Mohini's age.

Q.21. Pick out the solution from the values given in the bracket. Show that other values do not satisfy:

$$2y - 3 = 7 ; \quad (0, 3, 5, 7)$$

Q.22. A worker earns Rs. 1200 a month and spends Rs. 800. Find the ratio of his :

- i) expenditure to income
- ii) saving to income
- iii) saving to expenditure

Q.23. Kavita earns Rs 36,800 in 16 months.

- i) how much does she earn in 5 months?
- ii) in how many months will she earn Rs 55,200?

Q.24. Name and draw the figure having

- i) 4 lines of symmetry
- ii) 3 lines of symmetry
- iii) no reflection symmetry
- iv) infinite lines of symmetry

Q.25. Draw a line segment of 10 cm and divide it into four equal parts.

**SERVICE BEFORE SELF**

## Sample Question Paper -2

Subject: Maths

Time Duration: 3 hours

M.M: 80

### General Instructions:

Q 1 to 5 carry 2 marks ;

Q 6 to 15 carry 3 marks;

Q 16 to 25 carry 4 marks;

Q.1. Write the first seven multiples of 2. What fraction of them are divisible by 3?

Q.2. Convert 63 rupees 9 paise to rupees.

Q.3. Two sides of a triangle are 10 cm and 0.12 m. Perimeter of the triangle is 35 cm. What is the length of the third side?

Q.4. Construct an angle of  $45^{\circ}$  and label it.

Q.5. Draw and show the lines of symmetry of a regular hexagon.

Q.6. A labourer earned Rs  $58\frac{1}{2}$ . He spent Rs  $18\frac{3}{4}$  on food and Rs  $6\frac{1}{5}$  on other needs. How much money is left with him?

Q.7. Sunita travelled 15 km 268 m by bus, 7 km 7 m by car and 500 m on foot to reach her school. How far is her school?

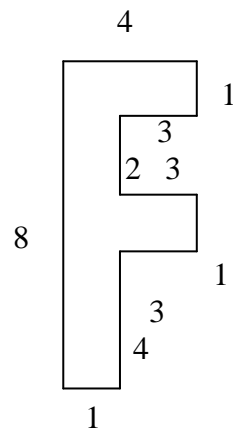
Q.8. In a shop the shirts of following sizes were sold:

34	38	42	40	44	32	34	36	42	40
44	36	38	42	44	40	42	32	34	38
42	40	36	42	40	38	36	40		

Arrange the data in the tabular form using tally marks.



Q.9. Find the area of the given figure:



Q.10. Mita scored 30 marks in Maths, x marks in Science and y marks in English. Her teacher deducted 5 marks for bad handwriting in all the subjects. What is her score in the each subjects? Also write the expression for the total score.

Q.11. Hema and Neha invested Rs 10000 and Rs 20000 respectively in a business. They decided to share the profit in the ratio of their investment. If their profit is Rs 12000, how much does each get?

Q.12. Are the given ratios in proportion:

300 g to 2 kg and 8 months to 2 years

Q.13. Write the letters of the word "ALGEBRA" which have vertical line of symmetry and which have horizontal line of symmetry. Draw and show also.

Q.14. Construct an angle of  $75^\circ$  and bisect it.

Q.15. Draw a triangle ABC. Construct the angle bisector of angle A and angle B. Where do they meet?

Q.16. Simplify :  $3\frac{5}{6} + 4\frac{3}{4} - 5 - 1\frac{3}{8}$

Q.17. Palak sold picklie weighing 14 kg. Out of which 4 kg 700 g was mango pickle, 3kg 50g was lemon pickle, 2 kg 400 g was red chilly pickle and rest was green chilly pickle. What quantity of green chilly pickle was sold?

Q.18. The number of Maths books sold by shopkeeper on six consecutive days is as follows.

Days	Sunday	Monday	Tuesday	Wednesday	Thursday	Friday
Number	30	40	65	60	20	70

Draw a bar graph to represent the given information.

Q.19. How many envelopes of size 20 cm by 30 cm can be made from a rectangular sheet of paper 5 m by 3m? Also find the money spent in buying these envelopes if one envelope costs Rs 15.

Q.20. Shiny is  $x$  years old. Express the following in the form of an expression:

- i) two times Shiny's age after one year
- ii) five times Shiny's age 3 years ago
- iii) her Aunt's age if she is 6 times as old as Shiny's will be after 4 years
- iv) her sister's age if she is 4 years less than  $\frac{1}{3}$  of Shiny's age.

Q.21. Pick out the solution from the values given in the bracket. Show that other values do not satisfy:

$$25 - 3x = 4 ; \quad (0, 2, 7, 9)$$

Q.22. Out of 1800 students, 750 opted for basket ball, 800 opted for cricket and remaining for table tennis . Find the ratio of:

- i) basket ball to tennis
- ii) cricket to basket ball
- iii) basket ball to total

Q.23. Cost of 5 kg rice is Rs 107.50

- i) What will be the cost of 8 kg of rice?
- ii) What quantity of rice can be purchased in Rs 64.5?

Q.24. Name and draw the figure having

- i) 5 lines of symmetry
- ii) 1 line of symmetry
- iii) no reflection symmetry
- iv) infinite lines of symmetry

Q.25. Construct an angle of  $30^\circ$  and construct its angle bisector.

# Science

## Sample Question Paper -1

**Subject: Science**

**Time Duration: 3 hours**

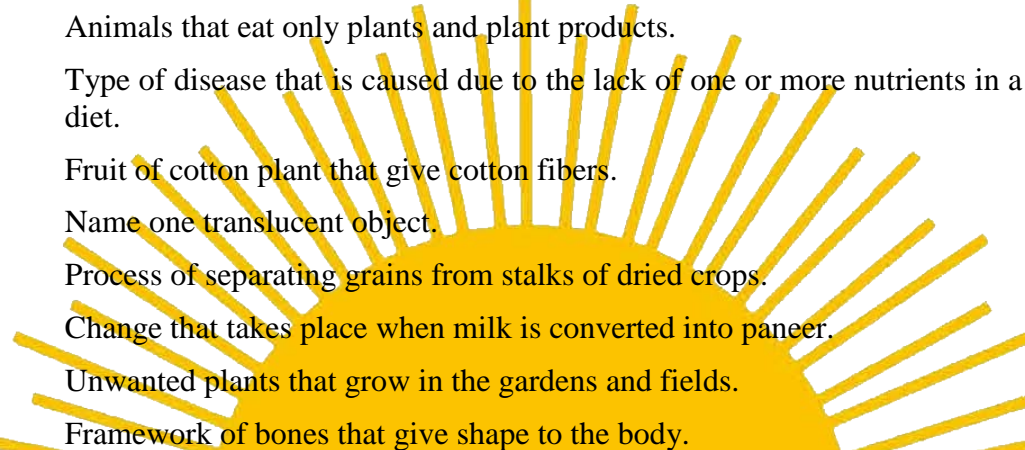
**M.M: 80**

### **General Instructions:**

All questions are compulsory.

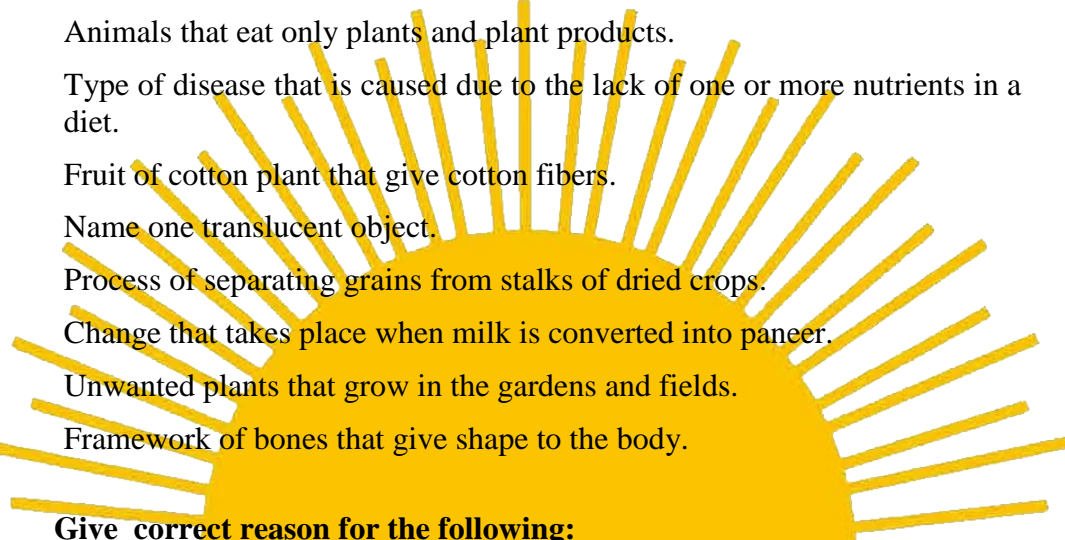
**1. Give one word for the following:**

**1x8=8**

- 
- Animals that eat only plants and plant products.
  - Type of disease that is caused due to the lack of one or more nutrients in a diet.
  - Fruit of cotton plant that give cotton fibers.
  - Name one translucent object.
  - Process of separating grains from stalks of dried crops.
  - Change that takes place when milk is converted into paneer.
  - Unwanted plants that grow in the gardens and fields.
  - Framework of bones that give shape to the body.

**2. Give correct reason for the following:**

**1x8=8**

- 
- Doctor advices to take an X –Ray image after an accident.
  - A plant dies when its leaves are coated with oil.
  - An ironsmith heats the metal rim before he fixes it on a wooden wheel.
  - A farmer uses method of winnowing to separate husk from the grains.
  - A wooden log floats on water whereas a metal coin sinks in it.
  - Harvested jute stems are kept submerged under water for few days.
  - One should first wash the vegetables and fruits before cutting them.
  - We must include sprouted grains in our daily diet.

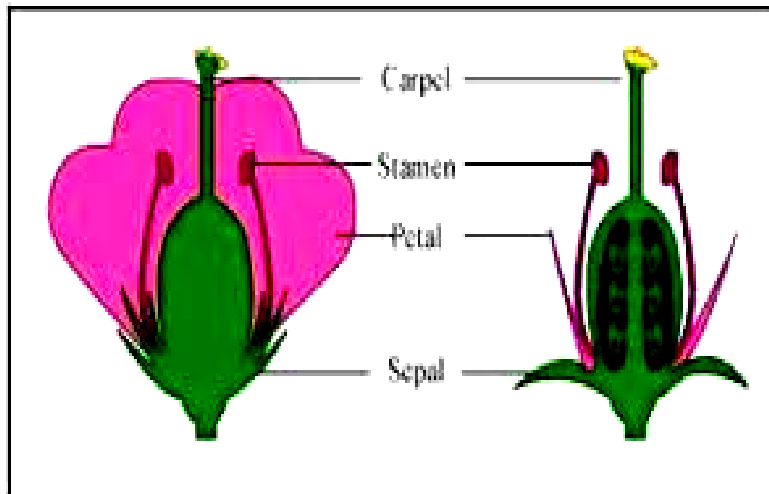
**3. Write any two differences with one example for the following:**

**2x2=4**

- Tap root and Fibrous root
- Bone and Cartilage

4 Observe the given diagram and answer the questions that follow:

3x1=3



- a. State one function each of stamen and sepal shown in the diagram. 2
- b. Why do plants possess colourful petals? 1

5. Short answer questions ( 20-30 Words)

2x6=12

- a. Name the two main sources of food for the organisms. What shall happen if there are no plants growing on Earth?
- b. 'Vitamin C gets easily destroyed by heat during cooking.' How should we consume food rich in it? Which disease is caused due to deficiency of Vitamin C?
- c. Explain the process of spinning yarn from fibres of cotton; name the simple devices used for it.
- d. 'Steel and plastic are two different materials.' Name any two properties shown by them. Write one use of each.
- e. What will you observe if plant having white flowers is dipped in red coloured water? Interpret the change with correct reason.
- f. Analyze why our knee joint cannot work like shoulder joint.

6 Answer in brief ( 40-60 Words)

3x5=15

- a. Which process is used for making sweaters and socks? How is it different from making the cotton fabric? 1+2
- b. Design a flow chart to explain the steps of salt farming. 3
- c. 'Contraction and Expansion are two properties associated with metals.' Explain them with an example. 3
- d. Name the two categories of plants with weak stem. State any two differences between them. 1+2
- e. 'A fish can survive in water and move easily. 'Enumerate three adaptations that help it to live in water. 3

- 7 Long answer questions :( Attempt any three) 5x3=15**
- a. Define the term 'Joint'. Which joints are present in our neck and skull? How do muscles help in body movement? 1+2+2
- b. Draw a well labeled diagram of a snail. Describe its method of locomotion. 2+3
- c. Draw a well labeled diagram of leaf. Write two differences between banana leaf and mango leaf. 3+2
- d. State four methods of separating solid impurities from a mixture. Explain the steps involved in the process of loading. 2+3

**8 Value based Question 3**

Water is the precious natural resource. Life is possible on planet Earth because of its presence. You have observed a lot of wastage of fresh water in your society. People wash their cars and balconies frequently.

- a. Suggest two measures that you can initiate with your friends in society to make people aware about the crises of fresh water in future and curb the above problem. 2
- b. Which value will you learnt while doing this initiative? 1

**Practical based Questions 6x2=12**

**9** 'Ravi was told by his teacher to perform protein test for the given food sample. He used baking soda and copper sulphate solutions. He did not record the correct observation.'

Will he record the correct observation? If not correct the procedure.

**10** 'You have accidentally poured some mustard oil in a beaker containing water.'

What will you observe on mixing the two liquids? Suggest the method to separate the two liquids.

**11** 'You find that on separating sand and water mixture by Sedimentation and Decantation some particles of sand were still found in supernatant.'

Which other method can be used for separation and why?

**12** Justify that melting of wax is different from burning of a candle.

**13** 'Two potted A and B plants were taken. Plant A was covered with a plastic packet whereas Plant B was kept in open.'

What change will you observe in both the potted plants after few hours? State the reason for the observation made.

**14** 'A scale is tied under your arm such that the elbow is in the center.'

Is it possible to bend your elbow if not why?

## Sample Question Paper -2

Subject: Science

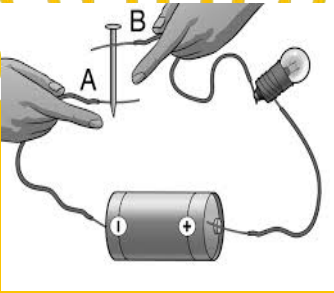

Time Duration: 3 hours

M.M: 80

1.	<b>Give one word for the following:</b> a) Process by which living organisms produce new members of their species. b) Breathing organs in a fish. c) A device that converts chemical energy into electrical energy. d) Materials that allow current to pass through them. e) Closed and continuous path through which current flows. f) The type of materials that cannot be attracted towards a magnet. g) An instrument used to find the directions. h) Number of poles a magnet has.	1x8=8
2.	<b>Give correct reasons for the following:</b> a) A pinhole camera forms a real image. b) We cannot see our reflection in mirror in a dark room. c) Connecting wires have a plastic coating over them. d) More number of iron nails stick at the poles of a bar magnet when brought near it. e) Water is known as a universal solvent. f) To clean their spectacles, people often breathe out on glasses to make them wet. g) Deep sea divers carry oxygen cylinders with them under water. h) A burning candle extinguishes after some time when covered with an inverted glass jar.	1x8=8
3.	<b>Differentiate between the following : (Write any two points for each)</b> a) Living things and Non-living things b) Image and Shadow	2x2=4
4.	<b>Draw well labeled diagram of the following:</b> a) Electric bulb	3x1=3
5.	<b>Short answer questions :( 20-30 words)</b> a) Water plays a very significant role in our lives. Write any two uses of it. b) What do you understand by Biodegradable waste? Give one example of it.	2x6=12 1+1 1+1



	<p>c) Mention any four activities that are possible due to presence of air. 2</p> <p>d) Explain why speed is important for survival in grasslands for the preys and predators that live there. 2</p> <p>e) Define (i) Reflection and (ii) Lateral Inversion. 1+1</p> <p>f) Write two measures that should be taken by us as a responsible citizen to minimize the overuse of plastics. 2</p>	
<b>6.</b>	<b>Answer in brief :( 40-60 words)</b>	<b>3x5=15</b>
	<p>a) Explain in steps the process of formation of clouds. 3</p> <p>b) Explain with an activity that soil has air in it. 3</p> <p>c) What is the percentage of Oxygen present in air? Write any two importance of oxygen present in air. 1+2</p> <p>d) What do you understand by 3 R's. Describe them. 3</p> <p>e) What is an electric switch? Explain its working in an electric circuit with the help of diagrams. 1+2</p>	
<b>7.</b>	<b>Long answer questions:(Attempt any three)</b>	<b>5x3=15</b>
	<p>a) i) What is a magnet? 1</p> <p>ii) What do you understand by Attractive and Directive property of a magnet? 2</p> <p>iii) How is the horse shoe magnet and a bar magnet stored? 2</p> <p>b) i) What is wind? 1</p> <p>ii) State any three uses of windmill. 3</p> <p>iii) Draw its diagram. 1</p> <p>c) i) What is Water cycle? What is the importance of water cycle in nature? 1+1</p> <p>ii) Write down the equation to represent the interconversion of water in its three forms. 1</p> <p>iii) Why sea water is unfit for drinking? Which natural phenomenon takes place while separating salt from sea water? 1+1</p> <p>d) i) Define Composting? 1</p> <p>ii) What type of worms are used for vermicomposting. How do they grind their food? 2</p> <p>iii) Why is it beneficial to add powdered egg shells to a vermicompost pit? 1</p> <p>iv) Why a vermicompost pit needs to be kept well moisturized? 1</p>	

<p><b>8.</b></p>	<p><b>Value based question:</b></p> <p>Samira has observed on regular basis that some of her classmates forget to switch off the lights and fans when they leave for the games period. They do not consider it to be of serious matter. She goes to her class teacher and requests her to allow Samira to go at the end so that she can take the responsibility of switching of the lights and fans daily. To her surprise Samira noticed a lot of change in her classmates after her practice that led to energy conservation.</p> <p>1) Why do you think some students ignored the lit lights and fans when they were going for the games period?</p> <p>2) What values are displayed by Samira? Will you follow the steps taken by her in your class?</p>	<p><b>3</b></p> <p>1</p> <p>2</p>
<p><b>9.</b></p> <p><b>A</b></p> <p><b>B</b></p>	<p><b>Practical based question:</b></p> <p>Observe the given picture and answer the following questions:</p>  <p>i) Will the current flow in the above circuit?</p> <p>ii) What is the function of iron nail shown in? What shall happen if an eraser is used instead of a nail?</p>  <p>Fig. I</p> <p>Fig. II</p> <p>i) Will the water enter inside the bottle if it is immersed in water vertically upside down as shown in fig. I?</p> <p>ii) What will happen if the bottle is tilted as shown in fig. II? Which property of air does it relate to?</p>	<p><b>4x3=12</b></p> <p>1</p> <p>2</p> <p>1</p> <p>2</p>

<b>C</b>	Why do poles of the bar magnet shows maximum magnetism? Explain with an activity.	3
<b>D</b>	'Oxygen supports burning.' Name the gases that do not support burning. What shall happen if only pure oxygen is present in the atmosphere in a large amount?	1+2



***SERVICE BEFORE SELF***

# Social Science

## Sample Question Paper -1

**Subject: Social Science**

**Time Duration: 3 hours**

**M.M: 80**

### General instructions:-

- Attempt all questions.
- Questions carrying **1 mark** should not exceed **20 words**.
- Questions carrying **3 marks** should not exceed **60 words**.
- Questions carrying **5 marks** should not exceed **100-120 words**.

### Section 'A'-History

- Q1.** Who provided the labour for the agricultural work done during the development of the mahajanapadas? (1)
- Q2.** Where did Buddha give his sermon for the first time? (1)
- Q3.** Name some of the important cities of the Mauryan empire? (1)
- Q4.** Who was the most important ruler of the Satavahanas? (1)
- Q5.** Why did people oppose the system of varnas? (3)
- Q6.** What were the main teachings of the Mahavira? (3)
- Q7.** Explain the features of the Prashastis written about Samudragupta. (3)
- Q8.** **Read the following passage and answer the questions given below:** (1+1+1=3)

A fisherman found a precious ring, which the king had given to Shakuntala, but which had been accidentally swallowed by a fish. When he went to the palace with it, the gatemen accused him of theft, and the chief police officer was rather rude. However, the king was happy when he saw the ring and sent a reward for the fisherman. Then, the police officer and the gatemen decided to take a share of the reward, and went along with the fisherman to have a drink.¶

1. Who wrote this story?
  2. What is the name of the king mentioned in this story?
  3. What was the reaction of the king when he saw the ring?
- Q9.** On a Political Map of India locate and mark the following:- (4)
1. Tamil Nadu
  2. Maharashtra
  3. Arunachal Pradesh
  4. Jammu and Kashmir

- Q10.** Describe the Mahayana & the Hinayana forms of Buddhism. (5)
- Q11.** Name the Chinese visitors who came to India 1400 years ago. What was their aim of visit. (2+3=5)

### Section B-Geography

- Q12.** Give a technical term for each of the following:- (1+1=2)
1. A landmass surrounded on three sides by water bodies.
  2. The system of winds in which the direction of winds is completely reversed from one season to the other .
- Q13.** Name the longest river of the world. (1)
- Q14.** Which two countries are island neighbours of India? (1)
- Q15.** Give an account of the island groups of India. (3)
- Q16.** What do you mean by migratory birds? Give some examples. (1+2=3)
- Q17.** How has Suez Canal affected the trade and commerce of India in the world? (3)
- Q18.** Draw a diagram of the earth to show important parallels and heat zones. (3)
- Q19.** In spite of being called the Blue Planet, the earth experiences shortage of water. Why? (5)
- Q20.** Which are the two processes that lead to the formation and development of landforms? Explain. (5)

### Section C-Political Science

- Q21.** Which level of government takes the decision on introduction of a new 1000 rupee note? (1)
- Q22.** Define urbanization. (1)
- Q23.** Why do you think that agricultural labourers are forced to accept low wages? (3)
- Q24.** Why do people prefer working in an organized sector? (3)
- Q25.** What is the relation between local bodies and state governments? (3)
- Q26.** Why is it necessary to register the FIR in the local area police station? (3)
- Q27.** What do you understand by democracy? What did Gandhi ji say about right to vote in his journal 'Young India' (2+3=5)
- Q28.** Why do small workshops and factories need casual workers? (5)

## Sample Question Paper -2

**Subject: Social Science**

**Time Duration: 3 hours**

**M.M: 80**

### General instructions:-

- Attempt all questions.
- Questions carrying **1 mark** should not exceed **20 words**.
- Questions carrying **3 marks** should not exceed **60 words**.
- Questions carrying **5 marks** should not exceed **100-120 words**.

### Section 'A'-History

- Q1.** Who developed the system of ashramas? (1)
- Q2.** How did Ashoka convey his message to the people? (1)
- Q3.** Where was the technique of making silk first invented? (1)
- Q4.** Name two religious philosophers who belonged to ganas or sanghas. (1)
- Q5.** Why do you think ordinary people were attracted to Bhakti? (3)
- Q6.** Explain the reasons for the construction of forts by the rajas of mahajanapadas. (3)
- Q7.** Who were Bhikkhus? What were their functions? (1+2=3)
- Q8.** **Read the following passage and answer the questions given below:** (1+1+1=3)

Bhakti comes from the Sanskrit term bhaj meaning -to divide or share. This suggests an intimate, two-way relationship between the deity and devotee. Bhakti is directed towards Bhagavat, which is often translated as god, but also means one who possesses and shares bhaga, literally good fortune or bliss. The devotee, known as the bhakta or the bhagavata, shares his or her chosen deity's bhaga.

1. What do we mean by the term 'Bhakti'?
2. Who is Bhagavat?
3. What kind of a relationship does a devotee share with his deity?
- Q9.** On an outline map of India locate and mark any four places known as Mahajanpadas 2500 years ago. (4)
- Q10.** Describe the assemblies in the Southern kingdoms. (5)
- Q11.** Mention four different kinds of rulers as described by Harishena. What was Samudragupta's policy towards them? (5)

### Section B-Geography

- Q12.** **Give a technical term for each of the following:-** (1+1=2)
1. The climate found in the areas far from the ocean and seas and characterized by hot summer and cold winter.



2. A very fine soil brought by rivers and deposited in the river basin.

- Q13.** Where did ‘Sunderbans’ get its name from? (1)
- Q14.** Which two Indian rivers form the largest delta in the world? (1)
- Q15.** How are the human beings disturbing the balance of nature? (3)
- Q16.** What are the drawbacks of cutting trees? (3)
- Q17.** Draw a well labelled diagram of volcanic mountain. (3)
- Q18.** What is the difference between mountain and a plateau? (3)
- Q19.** Differentiate between latitude and longitudes. (5)
- Q20.** What are different steps taken by the government to conserve wildlife? (5)

### **Section C-Political Science**

- Q21.** In a monarchical form government who is the head of the government? (1)
- Q22.** Name the main crop that is grown in the Kalpattu village. (1)
- Q23.** Describe the problems faced by a rural police station. (3)
- Q24.** Compare the livelihood challenges faced by rural and urban administration. (1+2=3)
- Q25.** Explain the term ‘Constitutional Democracy’. Give example. (2+1=3)
- Q26.** How does Municipality or Municipal Corporation get its money? (3)
- Q27.** State any five functions of a District Collector. (5)
- Q28.** What are the main features of a democratic country? (5)



***SERVICE BEFORE SELF***